



# Rugged Mobile Computing



Price  
Checkers



Rugged  
Tablet PCs



Rugged IoT  
Handheld Devices

# Empowering Your Retail EcoSystem

To help digitalize and streamline processes within retail industries, ARBOR offers a portfolio of Internet of Retail (IoR) front-end data retrieval and computing to back-end unified management, our solution can efficiently help connect retail ecosystem.

solutions including both hardware computing systems as well as a cloud-based central management platform. From customers, products and places within a customer’s IoR ecosystem and create a more intelligent and connected

Intelligent Retail



Asset Predictive Maintenance



Efficient Management of All Endpoints



Demand-aware Merchandise Planning



Big Data-driven Decision Making

IoT Management Platform



Real-Time Monitoring



Data Visualization

Microsoft Azure

Private Cloud



Application Management

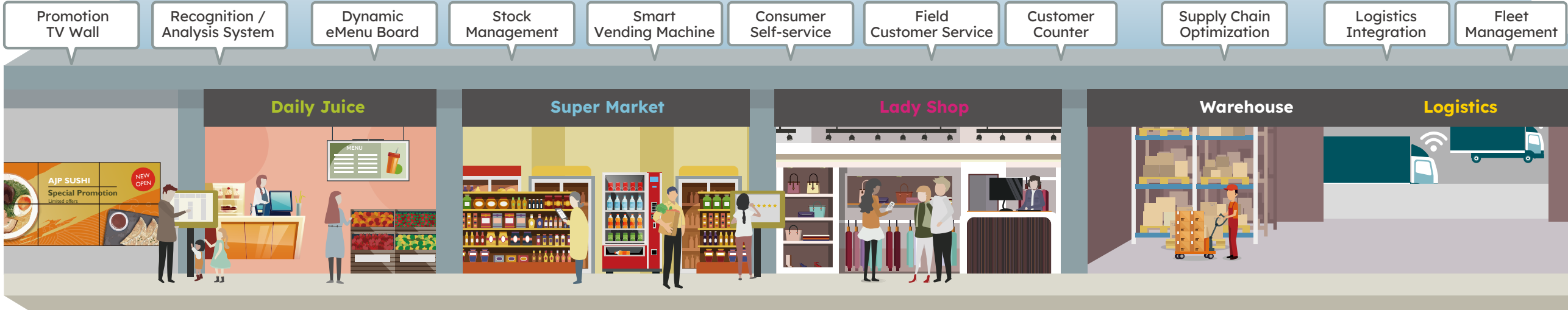


Content Distribution



Remote Access

Applications



Computing Terminals

Multi-Display Terminal



Edge Computers



Tablet Computers



Touch Panel PC



Open Frame Panel



IoT Handheld



POS



Mobile POS



Graphic Order Terminal



Rugged Handheld



Industrial Tablet



In-Vehicle Terminal



IoT Devices



Camera



RFID Reader



NFC



Beacon



Barcode Scanner



GPS



MSR



Sensor



Smart Card Reader



Fingerprint Sensor



# Intelligent Retail

## Efficient Customer Service

The Internet of Things is revolutionizing how retailers engage with their customers and run their operations. Retailers that take the lead in IoT gain an important advantage in an already competitive environment. The IoT movement offers retailers new opportunities for growth in critical areas by improving customer experience, optimizing supply chain management and identifying new channels and revenue streams.



# Intelligent Logistics

## Boosts Distribution Efficiency

Logistics management plays an essential role in an enterprise's productivity. To accelerate the find-and-move operations in today's warehousing and logistics applications, ARBOR offers a comprehensive range of mobile rugged devices featuring versatile data collection methods, real-time communication and vehicle-related features to support the entire logistics management process from the warehouse or while in transportation.



### Better Mobility

- Compact, lightweight & easily portable
- Unique ambidextrous design for operation comfort



### Expansion Flexibility

- Rich I/O expansion support
- Full accessories to expand the functionality as needed
- Vehicle docking and desktop cradle for power charging



### IoT-ready Application

- Various vehicle identification devices (barcode scanners, RFID readers, NFC solutions)
- Microsoft Azure, IoT Cloud Solutions



### Rugged Design

- IP67/65-certified design
- MIL-STD-810G/F durability
- Reinforced chassis
- Sealed ports and doors



### Realtime Communication

- Integrated Wi-Fi and Bluetooth
- 3G and 4G LTE bands
- Worldwide modem capability



### Vehicle Ready

- GNSS/GPS for vehicle tracking
- On-the-move charging
- Time-saving dismountability



### Retail Pharmacy Chain Stores

- Location: Korea & Taiwan
- Product & Service: G0830



### Supermarket Price Checker

- Location: Poland
- Product & Service: PC1017



### Store Inventory Management

- Location: Europe
- Product & Service: G0975M / GT-500



### Improved Brewer's Logistics & Distribution

- Location: UK
- Product & Service: GT-500



### Empower Forklift Operation Efficiency

- Location: Italy
- Product & Service: G1052R



### Optimize Fleet Management

- Location: Belgium
- Product & Service: GT-78V

## Internet of Retail Solutions



Point-of Sale Terminal w/ Card Reader & Scanner



Mobile Rugged Tablet



Price Checker



Handheld Device

With a built-in barcode scanner, touchscreen and Android OS, the GT-500 has all the features the brewer needs to improve the distribution process. The GT-500 enables the brewery staff to accomplish their cask scanning and data collection with the maximum efficiency.

With the G1052R onboard, forklift operators can get picking and shipping instructions in real time. The G1052R ensures timely delivery between workstations as well as instant inventory updates.

ARBOR provides speedy customized design to address customer's in-vehicle charging needs. With our MDM, the solution ensures tracking of all trucks in the fleet at all times.



# Extreme Field Performance

Slim, Light & Durability Combined



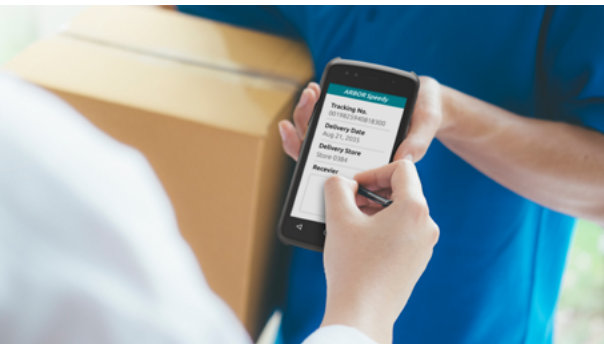
# Backstage Driving Force For the Smart Warehousing

Rugged Mobile Computing Devices



## Tailored for Logistics and Industrial Inspection

G47 is an industrial-grade Android device. The rugged handheld enables 1.5m drop resistance and IP67 sealing level rate. It has built-in a barcode scanner and a physical trigger button. This mobile computing device features multiple worldwide communication modes and has a 4000mAh high-capacity battery. G47 weighs 243g only.



With 1D/2D barcode scanner enables field workers to streamline field applications faster and more efficiently. It is slim, rugged, and explosion proof certified, making G47 suitable for inspection in petrochemical plants, equipment, and construction areas.



## G47 Mobile Computing Device

- Adopting octa-core processor MTK8768 & Android v11 OS
- Embedded 1D/2D barcode reader and physical trigger button
- Ruggedized design with IP67 rating
- World mode communications with 2G/3G/4G
- Implementing fingerprint authentication for security protection
- Precise GPS navigation with barometer integrated
- Lightweight design for everyday use, 243g
- Gloved touch support for warehousing, inventory, medical applications



## K430 Intelligent Handheld Device

- High resolution barcode scanner, support multi-scan function
- Equipped with a 4850mAh high capacity battery
- Support continuous barcode scanning up to 5 hours
- 4 inch multi-touch display and physical keyboard
- IP65 rating, 1.5m drop resistance



- ① GT-500 Standard Model
- GT-500-V For North America Verizon Network

- ② GT-500-UHF With UHF RFID Reader

## GT-500 Intelligent Handheld Device

- Quad-core ARM Cortex-A53 1.3GHz CPU
- Supports Android 7.0 operating system
- 5" TFT display with 5-point projected capacitive multi-touch
- Wi-Fi, Bluetooth 2G/3G/LTE and GPS supported
- Built-in 1D/2D barcode scanner and RFID/NFC reader
- Operating temperature: -15~55°C
- IP-67 certified, 1.5m (5ft.) drop resistance
- Gun handle pistol grip with integrated rechargeable 4800mAh battery (GT-500-UHF)
- UHF RFID reading range up to 5 meters (GT-500-UHF)





# Engage Business Anytime, Anywhere

Gladius GT-78VN  
7.85” Vehicle Mount Tablet



## Durability

- MIL-STD-810G & IP-65 certified
- Raised bezel for LCD impact protection
- I/O ports with hinged rubber covers
- Corning® Gorilla® Glass 3 compliant touch screen which is resistant to scratches, drops and pressure

## Reliable Connectivity

- 2G GSM/GPRS/EDGE, 3G WCDMA and LTE
- Dual SIM cards for dual network access providing optimal coverage
- Integrated Wi-Fi 802.11 a/b/g/n & Bluetooth 4.1

## User-Friendly Design

- Multi-touch projected capacitive touch screen
- Custom replaceable battery with optimized battery life
- Suite of sensors, including gyroscope, light sensor, M-Sensor/ E-Compass and G-sensor

## Versatile Data Collection

- 2D barcode scanner with physical trigger button
- Rear 13MP AF camera and front 5MP camera
- NFC/RFID reader

## Vehicle Application Ready

- Vehicle mount dock supporting cigarette power plug
- Active GPS module for route navigation



## Fire Department in China Implements ARBOR GT-78V

Staff at the Beijing Fire Department needed to improve their inspection workflow by going paperless. ARBOR partnered with a system integrator to deliver a complete solution using GT-78V as the “paper and pen” replacement. The GT-78V’s generous screen size made the transition from a clipboard to a tablet painless. The integrated camera allowed for instant, detailed documentations

of violations. With industry-leading IP65 certification and MIL-STD-810G compliance, the GT-78V’s rugged features allowed firefighters to operate without fear of interruptions caused by hardware failures.

As records could be better managed electronically and the quality of records is improved as a direct result, the GT-78V solution dramatically increased productivity of the fire department.


## Enhances Logistics Efficiency for a LTL Freight Expert in the US

To work without paperwork and streamline work process, a LTL freight company in the US was seeking a solution to enhance their Proof of Delivery efficiency. Upon their request, ARBOR provides the GT-78V, the IoT tablet utilized for both as an in-vehicle HMI and as a portable rugged tablet to fit in one hand to meet drivers’ needs on the go.




The GT-78V Proof of Delivery solution eliminates paper-based processes and human errors so that consignment can be accurate and guaranteed. Each party, including customers, drivers, and administrators, can get accurate data and synchronized information along with improved efficiency.


### Accessories




- Desktop Cradle
- Allows to use and charge the GT-78V at the same time
- LEDs indicating charging status



- Battery Charger
- 4-in-1 battery charger
- LEDs to display the status
- LEDs indicating charging status
- Overheat detection



- Vehicle Docking
- 3A/5V DC input
- Cigarette lighter power adapter
- Optional battery adapter provided



- 3-in-1 Holster



# Streamlining Warehousing & Logistics Operations

Gladius G0830 | 8" Tablet PC



## Features

- 8" TFT color LCD 1024 x 768 XGA resolution
- IPS LED display with projected capacitive multi-touch panel
- High mobility with connectivities, including WLAN and Bluetooth
- Identification devices (barcode scanner, RFID & NFC reader and MSR)
- Ideal for warehousing / retail / mPOS applications
- Ergonomic-centered mechanical design
- Compact and sleek design
- Supports Windows 10 & Android v5.x operating systems



## Accessories



### Docking Cradle

- 3 x USB 2.0 ports
- 1 x GbE LAN
- 1 x HDMI
- MSR, smart card reader & NFC reader



### Vehicle Cradle

- 2 x USB 2.0 ports
- Micro USB 5V DC In
- 12V DC Jack
- VESA 75 x 75 mm
- Shock & vibration tested



### Pistol Grip w/ Battery

- 8000mAh power bank
- Power status LED



### Pistol Grip



### K-Lock



### Rope Stylus Pen



### Hand Strap

# Purpose-built Ergonomics



## Sleek Look and Feel

The G0830 offers an aesthetically appealing design without compromising on functionality. Both the tablet and the docking cradle feature a sleek look and feel. Thus, the features make it a perfect fit for retail, hospitality and entertainment venues.



Optional Hand Strap



Barcode Triggers

## Lightweight

The ultra compact G0830 tablet PC weighs just 520 grams (1.15 lb) with the battery. It offers enterprise computing without compromising the sleek consumer style and feel. An optional hand strap is available to make it easier to carry and use on-the-go.

## Ambidextrous Design

Barcode triggers on the G0830 are engineered to fit both right and left-handed users to offer a comfortable grip with less fatigue for long-hour operations.

## Detachable Pistol Grip

The G0830 comes with an optional pistol-grip style barcode scanner for one-handed use. Its exceptional ergonomic design allows for a superior grip.

Moreover, it features a power bank (optional) for long hour operation. Power LED is also available to show power status.



## Compact w/ Adjustable View Angle

The G0830's docking cradle comes with an ultra-compact design to save counter space and significantly reduce your POS device's footprint.

For optimized display, you can tilt the tablet screen for your desired view angle.

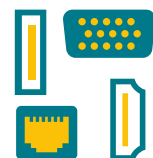
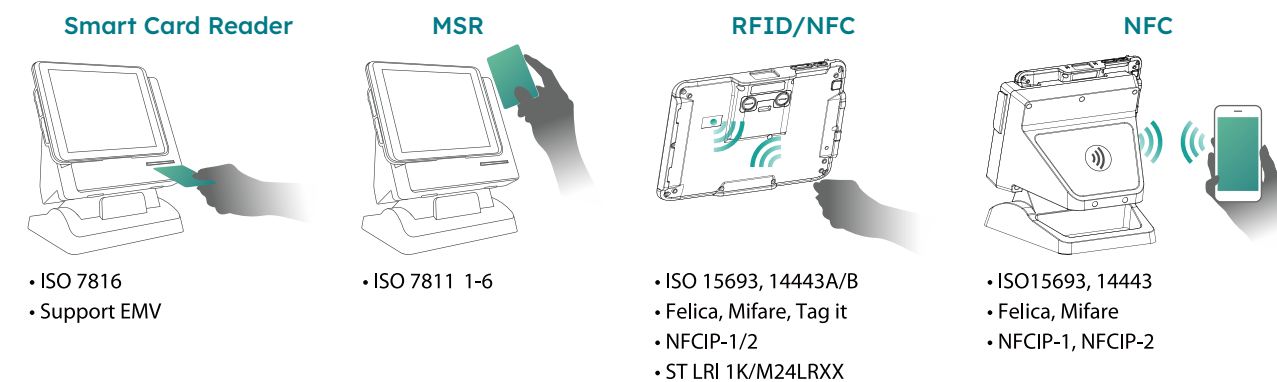




# Ultimate Flexibility, Versatile Functionality

## Multitude of Card Reading Capabilities

The G0830 tablet along with the cradle features a multitude of card reading capabilities, including magnetic stripe card, smart card and NFC. Thus it can be used for member identification and maintenance in applications, such as self check-in, bonus redemption or personal information query.



## High Expansion Capability

Featuring rich I/O for peripheral connections, the cradle enables the G0830 to fulfill the needs of a wide range of applications.

ARBOR also offers a modular design to deliver customer-centric solutions and to maximize flexibility and expandability.



## Dual OS Support

The G0830 fits both the conventional Windows-dominated POS market as well as the emerging Android market via Operating System and accessory support for both Windows 10 & Android v5.X.



## In-Vehicle Ready

Utilizing the compact vehicle docking that supports in-vehicle power, the G0830 can be quickly deployed into a vehicle for logistics and distribution applications.

# ARBOR's Tablet POS Selected to Improve Operations and Service for Retail Pharmacy Chain Stores

The G0830 all-in-one POS PC has been chosen by one of the largest retail pharmacy chains in Asia to implement their inventory management, interactive kiosk and intelligent POS systems. The customer selected the G0830 for its versatility, durability, cost-efficiency and overall suitability for profitable operations and utmost superior customer service in complex retail environments.

A retail pharmacy is a complex retail business that not only provides prescription drugs, but also carries thousands of other products that include over-the-counter drugs, cosmetics, magazines, toys, groceries, electronics and more. As a POS system, the ARBOR G0830 allows quick product lookups and item updates at the touch of a button, allowing efficient real-time inventory management.

During peak shopping hours, the ARBOR mobile POS tablet helps process checkout queues, thus reducing potential walkouts by impatient customers. The flexible system accepts NFC-based mobile payments, QR code coupons, and allows integration of peripherals, such as MSR, RFID and Smart Card Readers for credit, debit, and membership cards. This adds convenience, guarantees quick and secures transaction processing, and boosts customer satisfaction.



In short, the ARBOR G0830 POS system provides maximum flexibility, minimal downtime, lower installation costs, optimal inventory management, and superior customer satisfaction.



## Retail/Hospitality

- Mobile Point-of-sale (mPOS)
- Inventory tracking
- Tableside ordering
- Self-service kiosk
- Customer membership management



## Logistics

- Logistics and distribution
- Fleet management
- Fleet safety and driver monitoring



## Warehousing

- Stock management
- Inventory process management
- Assets tracking



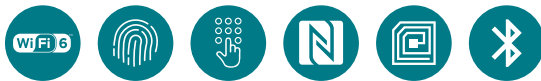
# Ramp Up Your Mobile Workforce

Gladius G0975/G0975M/  
G1017M/HT10  
Rugged Tablet PC



## G1017M

G1017M is a 10.1-inch Rugged Tablet powered by Intel's latest Elkhart Lake processor with Wi-Fi 6 capability, physical keypads, and fingerprint reader, perfect for retail inventory, point-of-sale, warehousing, and logistics applications.



### Features

- 10.1" Intel® Elkhart Lake N6415 Rugged Tablet PC
- Fully rugged for mobile POS or warehousing application
- 23-key keypad with numeric keys and function Keys
- Support Wi-Fi 6 wireless networking
- Implementing fingerprint authentication for security protection(optional)
- 1 x RJ-45 LAN port(optional)

## HT10

The HT10 delivers lightweight mobility with a weight of less than 1kg. In addition, it features a 10.1-inch high resolution HD screen and a Hot-swappable battery to enhance the user experience in warehouse management.



### Features

- 10.1" IPS TFT LCD 1200 x 1920 (FHD)
- Embedded 1D/2D barcode scanner and 8M front camera and 13M rear camera
- Removable 10000mAh battery
- Hot-swappable battery system provides 24/7 mobile computing
- Support multi-function extension
- 1m (3.3ft.) drop resistance and IP65 to protect from dust and water
- Applied with Google Mobile Service in Android 11 base



## A Taiwanese Retailer Selects G0975 to Improve Its Warehouse Management

A Taiwanese retailer was seeking a solution to improve their warehouse operations with a forklift-mounted rugged tablet. Reliability and wireless connectivity throughout their large warehouse were the main criteria. ARBOR's G0975 was selected due to its ruggedness, reliability, and rich I/O ports for external equipment integration.

After implementing the G0975 on their forklifts, the forklift operators' productivity was greatly improved. Thanks to the uninterrupted wireless connectivity and the large 9.7" touch display, the operators can get immediate access to stock information and item location. Timely movement of inventory is now possible. The operators can quickly receive a notification, search and move the goods, and then report the finished task to the warehousing system. The result is faster processing speed, less data loss and overall greater efficiency.

## G0975M Optimizes Inventory Management for a Multinational Retailer

A multinational food and shopping company in Asia outfitted its chain stores in Korea with ARBOR's G0975M to manage their merchandise inventory. Packed with features like a barcode scanner, wireless connectivity and a 9.7" multi-touch screen as the communication interface, the G0975M is a powerful GOT (graphic operation terminal) that enables the store associates to have the entire inventory at their fingertips. With inventory taking, ordering and forecasting efficiency greatly increased, the G0975M has been proven to deliver a quick return on investment.



- ① **G0975M**  
9.7" Intel® Celeron®, w/ Programmable Keypad
- ② **G0975**  
9.7" Intel® Celeron® , w/ Function Keys

### Features

- XGA IPS LED display with projected capacitive touch screen
- High computing performance from Intel® Quad Core Celeron®
- Fully rugged for mobile POS or warehousing application
- Meeting MIL-STD-810G, IP65, 4 ft. drop resistance
- High mobility, multiple connectivity (Bluetooth/WLAN)
- Adopting multi-touch screen with Corning® Gorilla® Glass
- Supporting external battery with battery cover and internal battery



# Streamline Your Mobile Operations

## Gladius G1052C/R 10.4” Rugged Tablet PC



# Enhancing Customer Experience

## PC1017 | Price Checker



## Grocery Store and Inventory Management Application

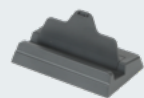
A retailer in Japan selects G1052C to manage their inventory and orders. Gladius G1052C can help people to purchase fresh food at home now, online grocery shopping can be your best alternative. It is used as an order management tablet. The tablet enables supermarket staff to collect fresh food for users' order, package them ready-to-go, and then have it either delivered or picked up from the store.



### Features

- 10.4” AFFS+ TFT Active Matrix with capacitive touch panel
- Ultra low power consumption
- Fully rugged for mobile POS or warehousing application
- Meeting MIL-STD-810G, IP54, 4 ft. drop resistance
- High mobility, multiple connectivity (Bluetooth/WLAN/WWAN)
- Identification devices (barcode scanner, RFID & NFC reader and MSR)
- Hot-swappable external battery w/ redundant internal battery
- 23-key keypad with numeric keys and function Keys
- I.P.A. (Isopropyl) alcohol clearing allowed

### Accessories



#### Desktop Cradle

- 3 x USB 2.0, 1 x LAN and DC-IN
- Vibration and shock resistance
- Charge and use your device simultaneously



#### Battery Charger

- Charge two batteries simultaneously
- Vibration and shock resistance
- 19V/3.4A charger power input



#### Capacitive Touch Pen



#### Neck Strap



#### Hand Strap



#### Mount Bracket



### Features

- Quad-Core ARM Cortex-A35 CPU 1.5G Hz, Android-based
- 10.1” LCD display
- 10-point projected capacitive multi-touch screen
- H.265/HEVC video decode
- PoE connectivity (PD)



## Better Engage Customers with the Multi-Functional PC1017

ARBOR's PC1017 was implemented in the stores of a Poland supermarket chain as the product & price information checking terminal. The compact PC1017 combines price checking and signage functions in one unit. It conveniently offers customers not only the price but also the full product information. By displaying promotion videos in regular intervals, retailers can also better engage their customers in the retail environment.

## Implement PC1017 as an Informative Tool for Promoting Sales

A worldwide sports gear & equipment chain store selected to install ARBOR's PC1017 in their stores in Poland as their price checker. Utilizing the barcode scanner and miniature screen, customers can receive price and product information. They can also input their member ID to get coupons and other product discount information.



## Build Your Own System

Customize your PC1017 via ARBOR's CTOS to meet your special needs:

- RFID & NFC module
- 1D barcode scanner
- 2D barcode scanner
- WLAN 802.11 a/b/g/n & Bluetooth 4.0 + BLE
- 2MP front-facing camera

# Selection Guide



Model	G47	K430	GT78-VN	G1017M	HT10
Dim. (WxHxD)	77.45 x 157.9 x 21.95 mm	68 x 164 x 20 mm	147 x 220 x 20.9 mm	301 x 187 x18 mm	246.1 x 164.2 x 14.9 mm
CPU	8*Cortex-4*A53 2.0GHz/ 4*A53 1.5GHz	MTK6762 Octa processor Cortex Quad-Core A53 2.0GHz / Quad Core xA53 1.5GHz	MTK MT8788 ARM Octa-core Quad Core Cortex A73 2.0GHz / Quad Core Cortex A53 2.0GHz	Intel® Pentium N6415 Quad-core 1.2GHz	Octa-core Quad Core Cortex A73 2.0GHz / A53 2.0GHz
Memory	3GB	2GB, up to 4GB	4GB	4G DDR4 SO-DIMM (up to 16G)	246.1 x 164.2 x 14.9mm
Storage	32GB*	32GB, up to 64GB	64GB	64GB eMMC / M.2 SSD	64GB/128GB
Camera	1 x 5.0 MP (Front) 1 x 13MP AF (Rear)	1 x 8 MP AF (Rear)	1 x 5.0 MP (Front) 1 x 13MP AF (Rear), 1 x Flashlight	1 x 5.0 MP (Front) 1 x 5.0 MP (Rear)	1 x 8.0 MP (Front) 1 x 13 MP (Rear) / 21M(optional)
WLAN	802.11 a/b/g/n/ac/r 2.4G & 5G dual mode	802.11 ac/a/b/g/n 2.4G & 5G dual mode	IEEE 802.11 a/b/g/n/ac	802.11 ax/ac/a/b/g/n	802.11 ac/a/b/g/n 2.4G & 5G dual mode
Bluetooth	Bluetooth 5.0	Bluetooth 4.1	Bluetooth 5.0	Bluetooth 5.2 BLE, Class2	Bluetooth 4.2
WWAN	BC0/GSM/GPRS/ EDGE Multislot Class / W-CDMA/UMTSFDD, TRRA- FDD) / CDMA2000 1xEV-DO Release 0 (TIA/IS- 856) / E-UTRA Bands supported	TDD-LTE / FDD-LTE / UMTS/ HSDPA/ HSPA/ HSPA+ (900/2100 MHz) / GSM/EDGE/GPRS (850/1800/900/1900MHz)	EDGE/GPRS/GSM: 1900/1800/900/850 MHz HSPA+/HSPA+/HSPA/ WCDMA B1/B2/B5/B8 TDD-LTE (B34/B38/ B39/B40/B41) FDD-LTE (B1/B2/B3/B4/B5/B7/ B8/B12/B17/B20/B28A/B28B)	-	2G: GSM/GPRS: 850/900/1800/1900 3G:WCDMA: B1/B2/B5/B8 4G-LTE Bands: 1/2/3/4/5/7/8/12/17/19/20/28A/ 28B/34/38/39/40/41
GPS	Yes	Yes	Yes	-	Yes
Audio & Vibrator	2 x Mic, 1 x Speaker	1 x Receiver, 1 x Speaker, 1 x Mic, 1 x Headphone Jack	1 x built-in microphone, 1 x built- in speaker (1.5W), 1 x vibrator	1 x Microphone, 1 x Speaker 1 x 3.5 mm Phone/ Mic combo Jack	2 x microphone 1 x speaker (2W), 1 x vibrator
SD card slot	1 x microSD	1 x microSD	1 x microSD (max. 512GB)	1 x microo SD/SDHC/SDXC	1 x microSD (max. 512GB)
SIM / T Card Type	1 x Nano + T Card / 2 x Nano	2 x micro-SIM	2 x micro-SIM	-	2 x Nano SIM / 1 x Nano SIM, 1 x micro SD
USB Port	1 x USB Type C	1 x Micro 5-pin USB cable	1 x micro USB 2.0	1 x USB 3.0 Type-A 1 x USB Type-C	1 x USB Type-A, 1 x USB Type-C
Display	5"	4"	8"	10.1"	10.1"
Max. Resolution	1280 x 720	800 x 480	1280 x 800	1280 x 800	1200 x 1920
Touch Screen	Projected Capacitive 5-Point Multi-Touch	Projected Capacitive 5-Point Multi-Touch	Projected Capacitive 5-Point Multi-Touch	10-point projected capacitive multi-touch	Projected Capacitive 5-Point Multi-Touch
Power Adpt. Input	100~240VAC	100~240VAC	100~240VAC	100~240VAC	100~240VAC
Power Adpt. Output	DC 9V, 2A	5V/2A, 9V/2A, 12/1.5A (Quick Charge)	DC 9V/2A, 5V/2A	19VDC, 3.42A, 65W	9V/2A
Battery	1 x 4000mAh	1 x 4850mAh	1 x 6200mAh	1 x	1 x Hot swappable 3.8V 10000mAh
Barcode scanner	Honeywell N6603 Zebra SE4710	CR8900 (CODE decoding ) Honeywell N6603* Barcode SE4710*	1D/2D barcode reader	-	Honeywell 3603 / 6603
RFID & NFC	Yes	Yes*	Yes	Yes	Yes
Docking	Desktop Charging Docking	-	-	Desktop Charging Docking	Desktop Charging Docking
Certification	Explosion Protection Ex ic IIC T5 Gc X (No.: ML081100705740)	CCC	-	CE, FCC, NCC, BSMI, CCC	CE, FCC, NCC, BSMI, CCC

\*Optional



Model	Gladius G0830	PC1017	Gladius G0975	Gladius G0975M	Gladius G1052C/R
Dim. (WxHxD)	208.5 x 150.6 x27 mm	248.3 x 194.4 x 35.2 mm	260 x 200 x 29 mm	260 x 200 x 29 mm	294 x 205 x 25 mm
CPU	Intel® Atom™ x5-Z8350 Processor	ARM Quad-Core Cortex A35 1.5Ghz	Intel® Celeron® N2930 Quad-Core 1.83 GHz	Intel® Celeron® N2930 Quad-Core 1.83 GHz	Intel® Celeron® N2930 Quad-Core 1.83 GHz
Graphics	Intel® HD Graphics	-	Intel® HD Graphics	Intel® HD Graphics	Intel® HD Graphics
Memory	2GB DDR3L	2GB DDR4	2GB DDR3L SO-DIMM	2GB DDR3L SO-DIMM	2GB DDR3L SO-DIMM
Storage	64GB eMMC	16GB eMMC	1 x 32GB MLC mSATA SSD	1 x 32GB MLC mSATA SSD	1 x 32GB MLC mSATA SSD
Camera	1 x 2.0 MP (Front) 1 x 8.0 MP, AF (Rear)	1 x 2MP (Optional)	1 x 5.0 MP	1 x 5.0 MP*	1 x 5.0 MP
WLAN	802.11 a/b/g/n/ac	802.11 a/b/g/n	802.11 a/b/g/n	802.11 a/b/g/n	802.11 a/b/g/n
Bluetooth	Bluetooth 4.1	Bluetooth 4.0 BLE	Bluetooth 4.0 LE	Bluetooth 4.0 LE	Bluetooth 4.0 LE
WWAN	-	-	-	-	HSUPA/HSPA+/LTE*
GPS	Yes*	-	Yes*	Yes*	Yes*
LAN	1 x RJ-45	1 x10/100M w/ PoE	1 x RJ-45 (cradle)	1 x RJ-45 (cradle)	1 x RJ-45 (cradle)
Audio	1 x Mic, 2 x Speakers, 1 x 3.5mm headphone jack	1 x Speaker	1 x Mic, 2 x Speakers, 1 x 3.5mm headphone jack	1 x Mic, 2 x Speakers, 1 x 3.5mm headphone jack	1 x Mic, 1 x Speakers, 1 x 3.5mm headphone jack
SD Card Slot	1 x microSD	-	1 x microSD/SDHC/SDXC	1 x microSD/SDHC/SDXC	1 x SD/SDHC/SDXC
Serial Port	-	-	2 x RS-232 (cradle)	2 x RS-232 (cradle)	1 x RS-232*
Video Output	1 x HDMI	-	1 x Mini HDMI 1.4 1 x VGA (cradle)	1 x Mini HDMI 1.4 1 x VGA (cradle)	-
USB Port	1 x Micro USB 2.0 (OTG) 3 x USB 2.0 (on cradle)	2 x USB 2.0	1 x USB 3.0, 1 x micro USB 2.0 4 x USB 2.0 (cradle)	1 x USB 3.0, 1 x micro USB 2.0 4 x USB 2.0 (cradle)	1 x USB 3.0 3 x USB 2.0 (cradle)
Display	7.85"	10.1"	9.7"	9.7"	10.4"
Max. Resolution	1024 x 768	1280 x 800	1024 x 768	1024 x 768	1024 x 768
Touch Screen	Projected Capacitive 10-Point Multi-Touch	Projected Capacitive 10-Point Multi-Touch	Projected Capacitive 10-Point Multi-Touch	Projected Capacitive 10-Point Multi-Touch	Projected Capacitive 10-Point Multi-Touch
Power Input	100 ~ 240VAC	100 ~ 240VAC	100 ~ 240VAC	100 ~ 240VAC	100 ~ 240VAC
Power Output	DC 5V, 2A, 10W (tablet) DC 12V, 5A, 60W (cradle)	DC 12V, 2.5A	DC 19V, 3.42A, 65W	DC 19V, 3.42A, 65W	DC 19V, 3.42A, 65W
Battery	1 x 4000mAh	-	1 x 2270mAh (4-cell), 1 x 2270mAh (2-cell)*	1 x 2270mAh (3-cell)	1 x 2500mAh, 1 x 1880mAh*
Smart Card Reader	On cradle	-	-	-	Yes*
Barcode scanner	2D	1D or 2D	Yes*	Yes*	Yes*
RFID & NFC	On table / On cradle*	Optional	-	-	Yes*
Stylus	Optional	-	-	-	Yes*
Docking	Desktop cradle*	-	Desktop cradle / vehicle cradle*	Desktop cradle / vehicle cradle*	Yes*
MSR	On cradle	-	Yes*	Yes*	Yes*

\*Optional



## Headquarters

### **ARBOR Technology Corp.**

10F., No.700, Zhongzheng Rd., Zhonghe Dist., New Taipei City 235, Taiwan

Tel: +886 2 8226 9396

Fax: +886 2 8226 9398

sales@arbor.com.tw

## The Americas

### **ARBOR Solution, Inc.**

Tel: +1 408 452 8900

Fax: +1 408 452 8909

info1@arborsolution.com

## Europe

### **ARBOR France**

Tel: +33 (0)1 55 63 90 87

Fax: +33 (0)1 81 50 00 29

info@arbor-france.com

### **ARBOR UK**

Tel: +44 1908 310100

Fax: +44 1908 310107

sales@arbor-uk.com

### **ARBOR Italy**

Tel: +39 011 19700011

Fax: +39 011 19700015

info@arboritalia.it

## China

### **ARBOR Shenzhen**

Tel: +86 755 83438567

Fax: +86 755 83438597

infocn@arbor.com.tw

### **ARBOR Beijing**

Tel: +86 10 82665810

Fax: +86 10 82665810-819

infocn@arbor.com.tw

### **ARBOR Shanghai**

Tel: +86 21 64287904

Fax: +86 21 64397795-188

infocn@arbor.com.tw

### **ARBOR Nanjing**

Tel: +86 25 83694872

Fax: +86 25 83694873-208

infocn@arbor.com.tw

## Asia-Pacific

### **ARBOR Taiwan**

Tel: +886 2 82269396

Fax: +886 2 82269398

sales@arbor.com.tw

### **ARBOR Korea**

Tel: +82 028555840

Fax: +82 028555841

sales@arbor.com.tw

### **ARBOR Australia**

Tel: +61 3 8736 0300

Fax: +61 3 8736 0325

info@arboraust.com